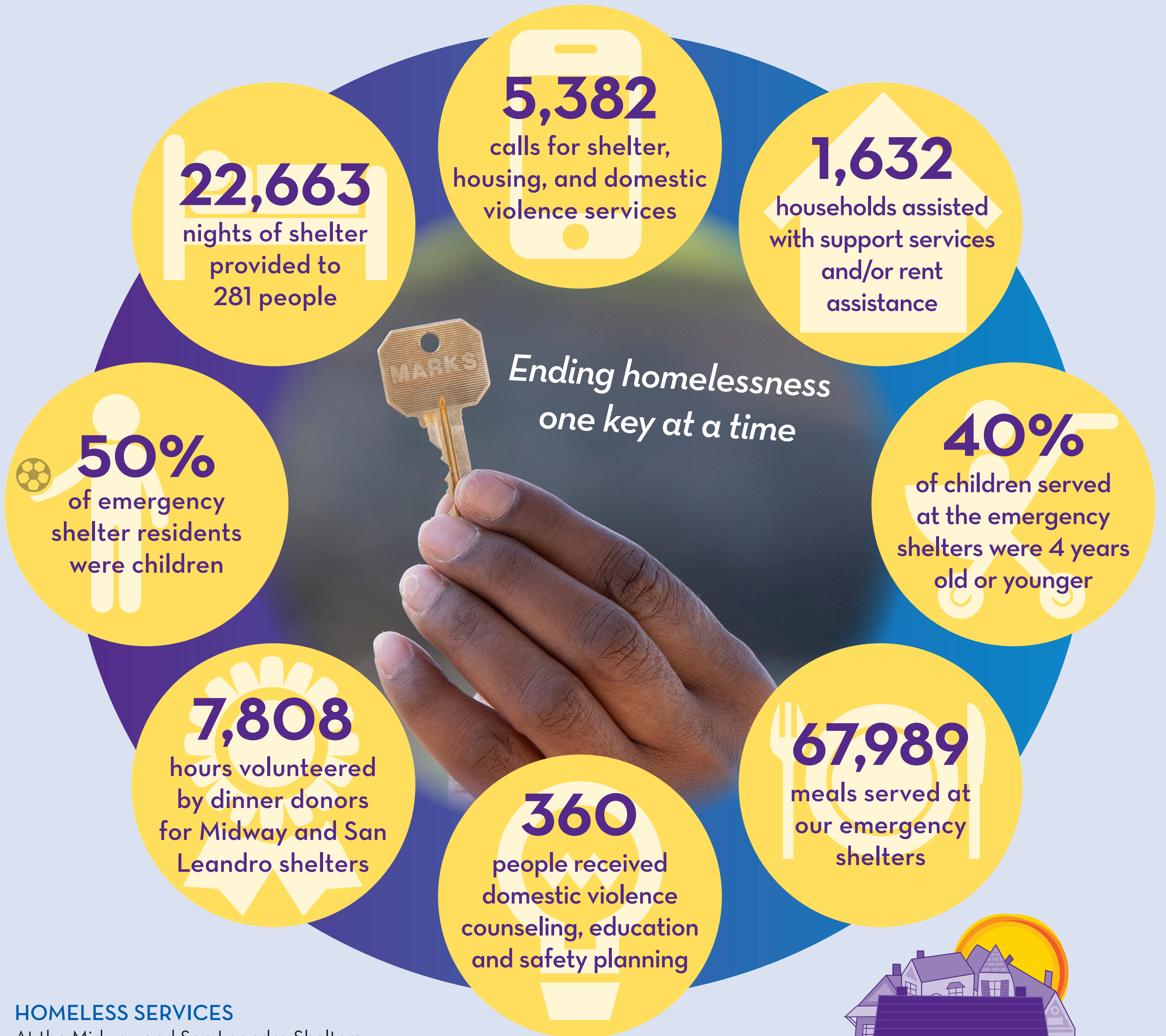


IMPACT by the NUMBERS

Building Futures is proud to share the numbers behind the individuals and families we helped between July 1, 2023 and June 30, 2024. With the help of our community, we continued to help those we serve to build new futures after homelessness and domestic violence.



HOMELESS SERVICES

At the Midway and San Leandro Shelters, women and children receive lodging, meals, and case management which prioritizes housing. Our housing resource centers and street outreach services assess and support Alameda County residents in need of housing and other resources. Street Outreach engages individuals and families and connects them with resources.

HOUSING SERVICES

Our Housing Programs are designed to help families and individuals to secure and retain housing. We provide both short-term and long-term rental subsidies and tailored wraparound services.

DOMESTIC VIOLENCE SERVICES

In addition to Sister Me Home safe house, our domestic violence services include outreach, education, counseling, referrals, housing services, shelter, and a 24-hour crisis line.



BUILDING FUTURES

Alameda • Oakland • San Leandro

Our Mission: To build communities with underserved individuals and families, where they are safely and supportively housed, free from homelessness and domestic violence.



bfwc.org